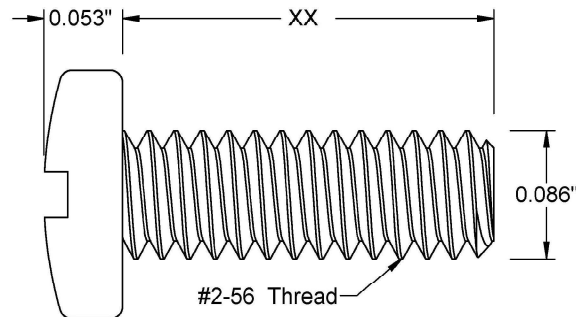
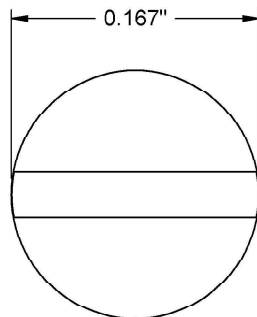



This drawing and the information contained herein are the confidential and proprietary property of Global Supply LLC



PART NUMBER	LENGTH
2C8MIPSP	1/8
2C12MIPSP	3/16
2C16MIPSP	1/4
2C20MIPSP	5/16
2C24MIPSP	3/8
2C28MIPSP	7/16
2C32MIPSP	1/2
2C40MIPSP	5/8
2C48MIPSP	3/4
2C56MIPSP	7/8
2C64MIPSP	1

#### NOTES:

1. INTERPRET DRAWINGS PER ASME Y14.5M-1994 STANDARD.
2. DIMENSIONS & TOLERANCES PER ANSI/ASME B18.6.3.
3. ROHS AND REACH COMPLIANT

DRAWING SCALE:			MATERIAL:		DESCRIPTION:		
STANDARD			STAINLESS STEEL		#2-56 SLOTTED PAN HEAD MACHINE SCREW		
TOLERANCES: <i>Unless specified otherwise, all dimensions are in inches</i>		x.xxx +/- 0.005 x.xx +/- 0.010 x.x +/- 0.010		FINISH:		PART NUMBER:	
				PASSIVATE		2CXXMIPSP	
DRAWN BY:		L.CLARY		FSCM No.		<div><div>Global Supply LLC</div><div>WORLDWIDE SUPPLIER OF ELECTRONIC HARDWARE, FASTENERS &amp; COMPONENTS</div><div>500 Division Street, Campbell, CA 95008-6906 Tel: 408 960 0370 Fax: 408 960 0375 Web: www.globalsupply.com</div></div>	
REV:		APPROVAL		DATE:			
INITIAL RELEASE		LJA		Sep 3, 2009			
A		LJA		Aug 26, 2014			
B		LJA		Apr 6, 2018			
				ECCN			
				EAR99 = NLR (No License Required)			