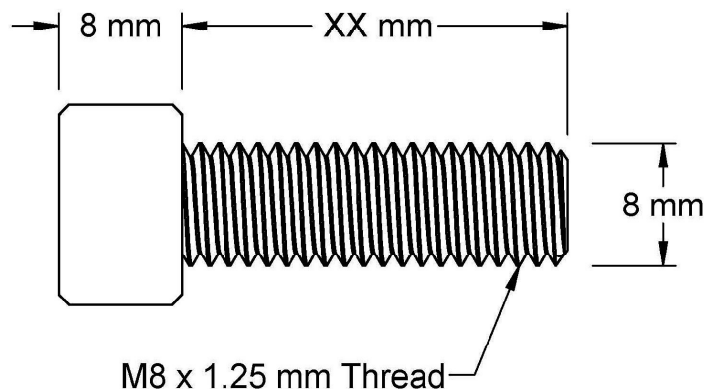
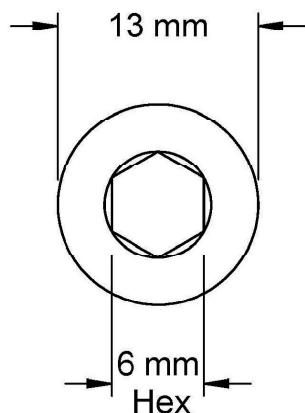
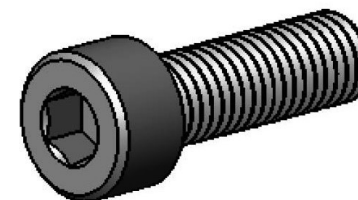



This drawing and the information contained herein are the confidential and proprietary property of Global Supply LLC



PART NUMBER	LENGTH
.80C80SCS2	8 mm
.80C100SCS2	10 mm
.80C120SCS2	12 mm
.80C140SCS2	14 mm
.80C150SCS2	15 mm
.80C160SCS2	16 mm
.80C180SCS2	18 mm
.80C200SCS2	20 mm
.80C220SCS2	22 mm
.80C250SCS2	25 mm



NOTES:
 1. INTERPRET DRAWINGS PER DIN 912 STANDARD.
 2. DIMENSIONS AND TOLERANCES PER ANSI/ASMEB 18.3.1M
 3. ROHS AND REACH COMPLIANT

DRAWING SCALE:			MATERIAL:		DESCRIPTION:	
METRIC			STEEL		M8 x 1.25 SOCKET HEAD CAP SCREW	
TOLERANCES: <i>Unless specified otherwise, all dimensions are in millimeters</i>		<div><div>x.xxx</div><div>+/- 0.100</div></div> <div><div>x.xx</div><div>+/- 0.100</div></div> <div><div>x.x</div><div>+/- 0.100</div></div>	FINISH:		PART NUMBER:	
			PLAIN		.80CXXSCS2	
DRAWN BY:		LCLARY		FSCM No.		<div><div>Global Supply LLC</div><div>WORLDWIDE SUPPLIER OF ELECTRONIC HARDWARE, FASTENERS & COMPONENTS</div><div>500 Division Street, Campbell, CA 95008-6906 Tel: 408 960 0370 Fax: 408 960 0375 Web: www.globalsupply.com</div></div>
REV:		APPROVAL	DATE:	67012		
INITIAL RELEASE		LJA	Jun 7, 2018	ECCN		
				EAR99 = NLR (No License Required)		