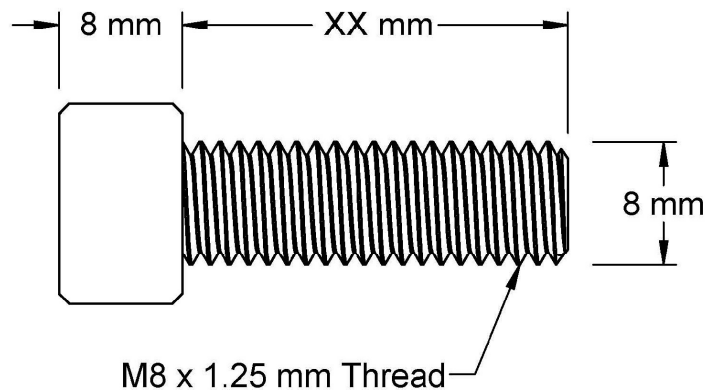
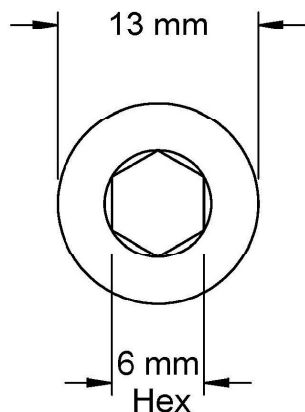
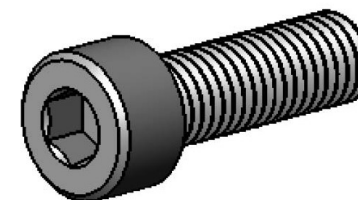



This drawing and the information contained herein are the confidential and proprietary property of Global Supply LLC



PART NUMBER	LENGTH
.80C80SCS1	8 mm
.80C100SCS1	10 mm
.80C120SCS1	12 mm
.80C140SCS1	14 mm
.80C150SCS1	15 mm
.80C160SCS1	16 mm
.80C180SCS1	18 mm
.80C200SCS1	20 mm
.80C220SCS1	22 mm
.80C250SCS1	25 mm



NOTES:
 1. INTERPRET DRAWINGS PER DIN 912 STANDARD.
 2. DIMENSIONS AND TOLERANCES PER ANSI/ASMEB 18.3.1M
 3. ROHS AND REACH COMPLIANT

DRAWING SCALE: METRIC		MATERIAL: 12.9 CLASS STEEL	DESCRIPTION: M8 x 1.25 SOCKET HEAD CAP SCREW
TOLERANCES: <i>Unless specified otherwise, all dimensions are in millimeters</i>	x.xxx +/- 0.100 x.xx +/- 0.100 x.x +/- 0.100	FINISH: PLAIN	PART NUMBER: .80CXXSCS1
DRAWN BY: LCLARY	FSCM No. 67012		 Global Supply LLC WORLDWIDE SUPPLIER OF ELECTRONIC HARDWARE, FASTENERS & COMPONENTS <small>500 Division Street, Campbell, CA 95008-6906 Tel: 408 960 0370 Fax: 408 960 0375 Web: www.globalsupply.com</small>
REV: INITIAL RELEASE	APPROVAL LJA	DATE: Jun 7, 2018	
ECCN EAR99 = NLR (No License Required)			