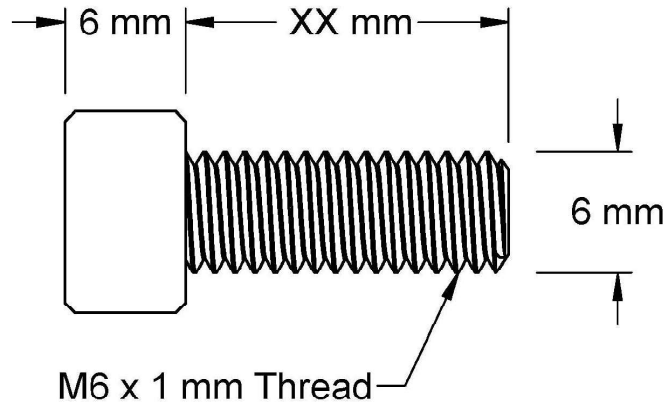
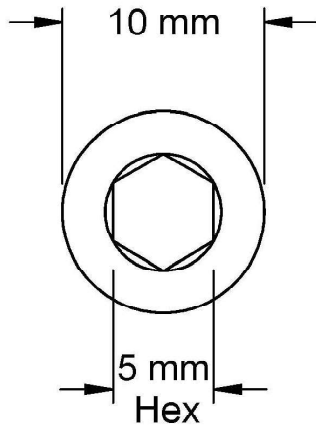
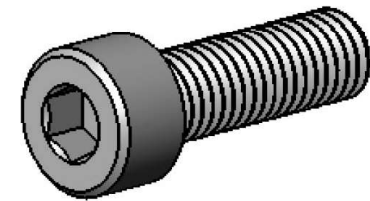



This drawing and the information contained herein are the confidential and proprietary property of Global Supply LLC



PART NUMBER	LENGTH
.60C80SCSHZ	8 mm
.60C100SCSHZ	10 mm
.60C120SCSHZ	12 mm
.60C140SCSHZ	14 mm
.60C150SCSHZ	15 mm
.60C160SCSHZ	16 mm
.60C180SCSHZ	18 mm
.60C200SCSHZ	20 mm
.60C220SCSHZ	22 mm
.60C250SCSHZ	25 mm
.60C300SCSHZ	30 mm



NOTES:
 1. INTERPRET DRAWINGS PER DIN 912 STANDARD.
 2. DIMENSIONS & TOLERANCES PER ANSI/ASME B18.3.1

DRAWING SCALE: METRIC		MATERIAL: ALLOY STEEL	DESCRIPTION: M6-1.0 SOCKET HEAD CAP SCREW
TOLERANCES: <i>Unless specified otherwise, all dimensions are in millimeters</i>	x.xxx +/- 0.100 x.xx +/- 0.100 x.x +/- 0.100	FINISH: ZINC I	PART NUMBER: .60CXXSCSHZ
DRAWN BY: LJA	FSCM No. 67012		 Global Supply LLC WORLDWIDE SUPPLIER OF ELECTRONIC HARDWARE, FASTENERS & COMPONENTS <small>500 Division Street, Campbell, CA 95008-6906 Tel: 408 960 0370 Fax: 408 960 0375 Web: www.globalsupply.com</small>
REV: INITIAL RELEASE	APPROVAL LJA	DATE: Apr 30, 2018	
ECCN EAR99 = NLR (No License Required)			