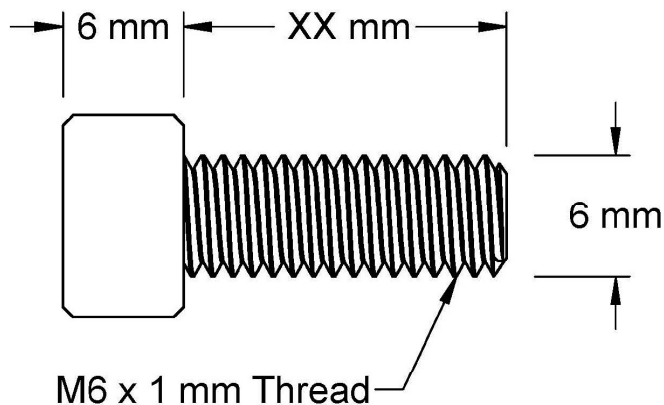
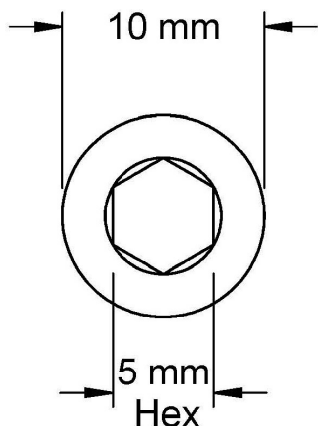
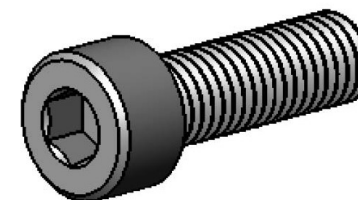



This drawing and the information contained herein are the confidential and proprietary property of Global Supply LLC



PART NUMBER	LENGTH
.60C20SCS2Z	2 mm
.60C100SCS2Z	10 mm
.60C120SCS2Z	12 mm
.60C140SCS2Z	14 mm
.60C150SCS2Z	15 mm
.60C160SCS2Z	16 mm
.60C180SCS2Z	18 mm
.60C200SCS2Z	20 mm
.60C220SCS2Z	22 mm
.60C250SCS2Z	25 mm
.60C300SCS2Z	30 mm



NOTES:
1. INTERPRET DRAWINGS PER DIN 912 STANDARD.
2. DIMENSIONS & TOLERANCES PER ANSI/ASME B18.3.1

DRAWING SCALE:			MATERIAL:		DESCRIPTION:	
METRIC			STEEL		M6-1.0 SOCKET HEAD CAP SCREW	
TOLERANCES: <i>Unless specified otherwise, all dimensions are in millimeters</i>		x.xxx +/- 0.100 x.xx +/- 0.100 x.x +/- 0.100	FINISH:		PART NUMBER:	
			ZINC I		.60CXXSCS2Z	
DRAWN BY:		LJA		FSCM No.		<div><div>Global Supply LLC</div><div>WORLDWIDE SUPPLIER OF ELECTRONIC HARDWARE, FASTENERS & COMPONENTS</div><div>500 Division Street, Campbell, CA 95008-6906 Tel: 408 960 0370 Fax: 408 960 0375 Web: www.globalsupply.com</div></div>
REV:		APPROVAL	DATE:		67012	
INITIAL RELEASE		LJA	Apr 30, 2018			
				ECCN		
				EAR99 = NLR (No License Required)		