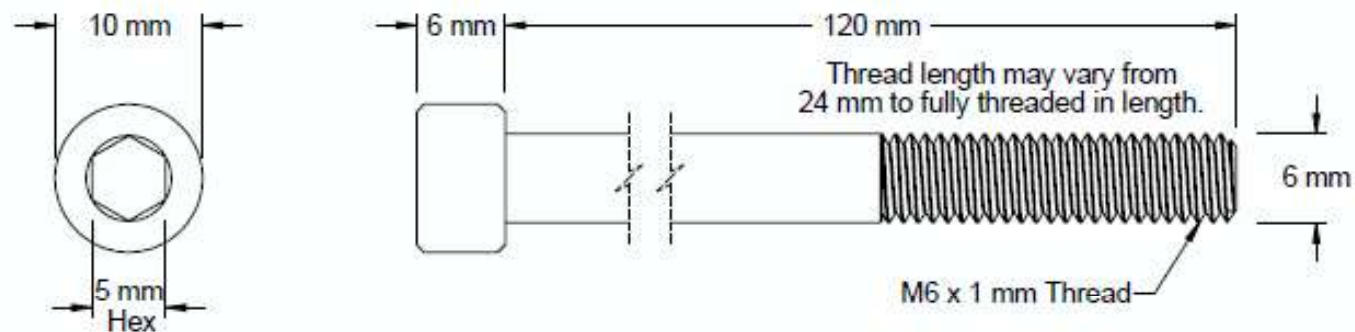


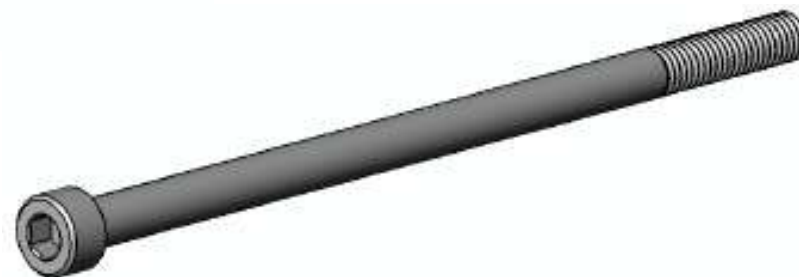
This drawing and the information contained herein are the confidential and proprietary property of Global Supply LLC




PART NUMBER	LENGTH
.60C1000SCS1	100 mm
.60C1100SCS1	110 mm
.60C1200SCS1	120 mm
.60C1250SCS1	125 mm
.60C1300SCS1	130 mm
.60C1400SCS1	140 mm
.60C1500SCS1	150 mm
.60C1600SCS1	160 mm
.60C1700SCS1	170 mm
.60C1800SCS1	180 mm
.60C1900SCS1	190 mm
.60C2000SCS1	200 mm

NOTES:

1. INTERPRET DRAWINGS PER 912 DIN STANDARD.
2. DIMENSIONS & TOLERANCES PER ANSI/ASME B18.3.1
3. ROHS AND REACH COMPLIANT



DRAWING SCALE: METRIC		MATERIAL: CLASS 12.9 STEEL	DESCRIPTION: M6 - 1.0 HEX SOCKET CAP SCREW
TOLERANCES: <i>Unless specified otherwise, all dimensions are in inches</i>	x.xxx +/- 0.005 x.xx +/- 0.010 x.x +/- 0.010	FINISH: PLAIN	PART NUMBER: .60CXXSCS1
DRAWN BY: L.CLARY	FSCM No. 67012		 Global Supply LLC WORLDWIDE SUPPLIER OF ELECTRONIC HARDWARE, FASTENERS & COMPONENTS 500 Division Street, Campbell, CA 95008-6906 Tel: 408 960 0370 Fax: 408 960 0375 Web: www.globalsupply.com
REV: INITIAL RELEASE	APPROVAL A	DATE: Apr 30, 2018	
ECCN EAR99 = NLR (No License Required)			